

**Manufacturer of cobotic manipulators**  
over the past **15 years**



Ergonomic and mobile equipment



Prevention of MSDs & WRI



An ASS at your disposal



A wide range adapted to all your applications



Study, design, assembly and installation by our own staff



Products made in France (44)

FABRIQUÉ EN FRANCE

**SCARA**

Product range  
50 & 100 kg



**ERGO360°**

Product range  
100, 150 & 200 kg



**PM**

Product range  
70 & 100 kg



**MAP**

Product range  
50 & 100 kg



NEODITECH - +33 (0)2 40 46 15 71 - 01/2023 - Photos not contractually binding. The author has applied his best efforts to checking this document and shall not be held liable for any errors or omissions



**SCARA**

Manipulator **arm**

Product ranges : 50 & 100 kg

European conformity

[www.neoditech.com](http://www.neoditech.com)

Follow us !



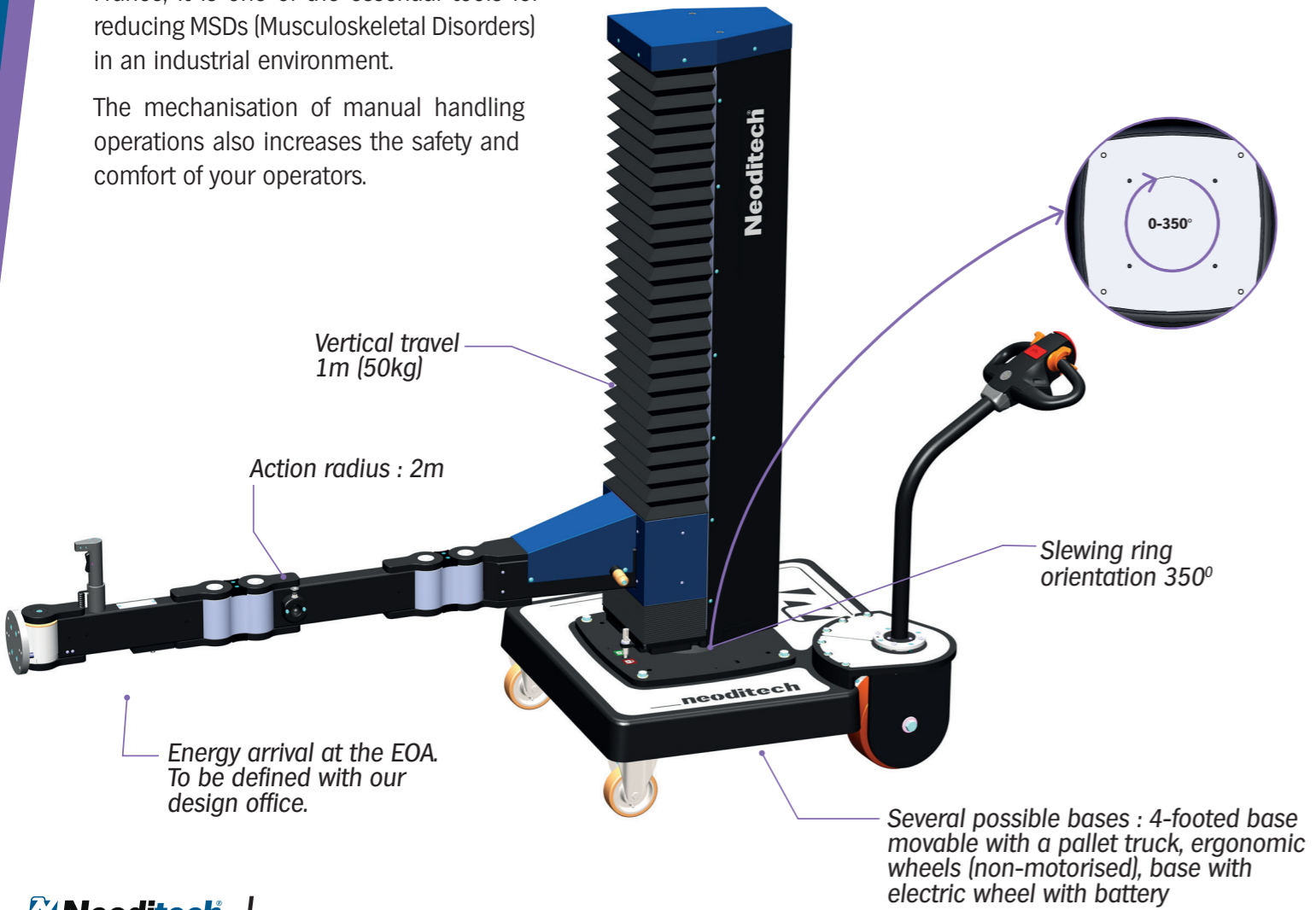
Z.A. des 4 Chemins  
56 Rue de la Folle Blanche  
44330 MOUZILLON - FRANCE  
Tél. **+33 (0)2 40 46 15 71**  
Email : [info@neoditech.com](mailto:info@neoditech.com)

# Neoditech SCARA Manipulator arm

The SCARA manipulator arm allows the handling of loads up to 100 kg with an action radius of 2 m.

Designed, developed and manufactured in France, it is one of the essential tools for reducing MSDs (Musculoskeletal Disorders) in an industrial environment.

The mechanisation of manual handling operations also increases the safety and comfort of your operators.



## The advantages

- compactness
- movable
- smoothness
- 230V 50Hz
- ease of use
- accuracy
- reduction of drudgery
- security
- technology innovation
- effortless for the user
- taken out of the center of gravity

## Arms



50 kg

**SC0403 - ELECTRIC** CE

- Radius 2m - Vertical travel 1m
- Capacity **50kg** at 2m including gripper
- Energy vertical movement : **electric on 230V 50Hz single-phase network**
- Integrated sensitive control handle
- Stop/ Down system
- Available in **stainless** steel ref. **SC0405**

**SC0420 - AUTONOMOUS**

- Radius 2m - Vertical travel 1m
- Capacity **50kg** at 2m including gripper
- Energy vertical movement : **battery-powered** To be installed on a mobile base SM0803
- Integrated sensitive control handle
- Stop/ Down system
- Available in **stainless** steel ref. **SC0422** on **SM0808**
- Universal charger

100 kg

**SC0404 - ELECTRIC** CE

- Radius 2m - Vertical travel 1,20m
- Capacity 100kg at 2m including gripper
- Energy vertical movement : **electric on 230V 50Hz single-phase network**
- Integrated sensitive control handle
- Stop/ Down system

**SC0421 - AUTONOMOUS**

- Radius 2m - Vertical travel 1,20m
- Capacity 100 kg at 2 m including gripper
- Energy vertical movement : **battery-powered** To be installed on a mobile base SM0807
- Integrated sensitive control handle
- Stop/ Down system
- Universal charger

# Base

**MOBILE BASE BY PALLET TRUCK**

- Mobile using pallet truck
- Adjustable-height feet
- Limited floor space
- Flat floor required

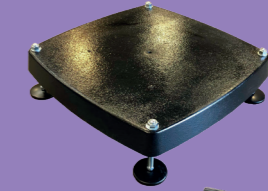
**MOBILE BASE ON SWIVEL CASTORS**

- Mobile on castors : 3 free, 1 w/brake
- Low chassis for low-level gripping
- Flat floor required
- Suitable for moderate and/or short distance travel

**MOBILE BASE WITH BATTERY POWERED DRIVEWHEEL**

- Mobile base with battery-powered drivewheel
- Low chassis for low-level gripping
- Handlebar with tiller head and anti-crush safety device
- Flat floor required
- Suitable for longer courses

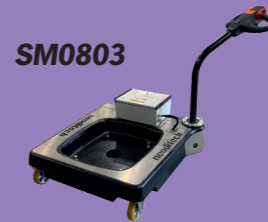
**SM0801**



**SM0802**



**SM0803**



**SM0806**



**SM0807**



**MOBILE BASE BY PALLET TRUCK**

- Mobile using pallet truck
- Adjustable-height feet
- Limited floor space
- Flat floor required

**MOBILE BASE WITH BATTERY POWERED DRIVEWHEEL**

- Mobile with battery-powered drivewheel
- Low chassis for low-level gripping
- Handlebar with tiller head and anti-crush safety device
- Flat floor required
- Suitable for longer courses

# Tools

**OUT004**  
Hook



**OUT053**  
Hook



**NEODITECH** is always aiming for the simplest tool for your operators but some manipulations require a **specific energy supply**.

In this case, **NEODITECH** can provide you an **electric or pneumatic** energy supply at the EOA.

With our tool integration plate, you will be able to **fix your gripper with ease**.

**Concerning gripping tools, please contact your partners.**

## 50 kg range

**FC0472**  
Quick change fixed tool



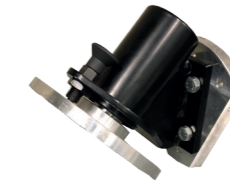
**FC0475**  
Manual rotation



Pivot brakes



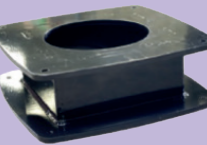
**FC0482**  
Manual Tilt



**FC0473**  
Quick change mobile tool

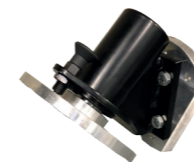


**FC0478**  
Extension



## 100 kg range

**FC0493**  
Manual tipping



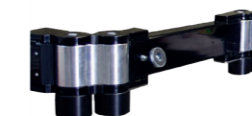
**FC0476**  
Manual rotation



**FC0474**  
Quick change fixed tool



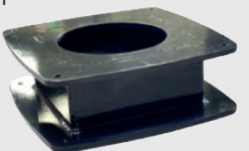
Pivot brakes



**FC0477**  
Quick change mobile tool



**FC0487**  
Extension





**SC0403**



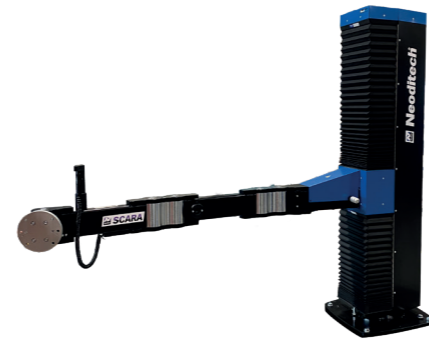
**SC0403**

base **SM0801**



**SC0420**

base **SM0803**



**SC0404**



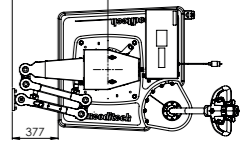
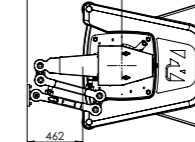
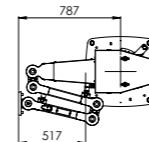
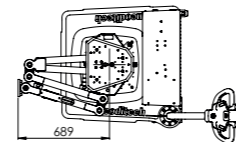
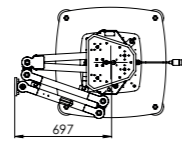
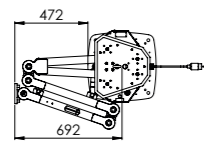
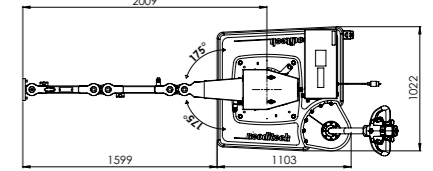
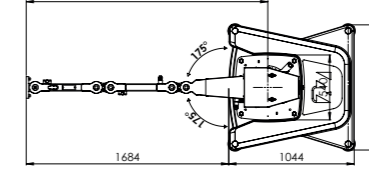
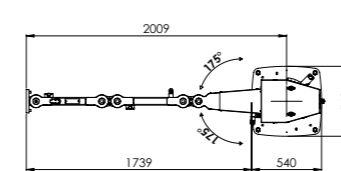
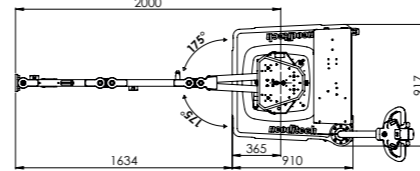
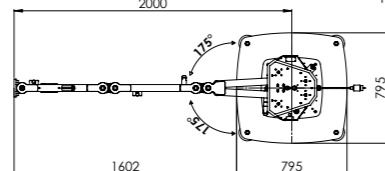
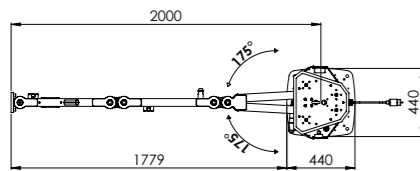
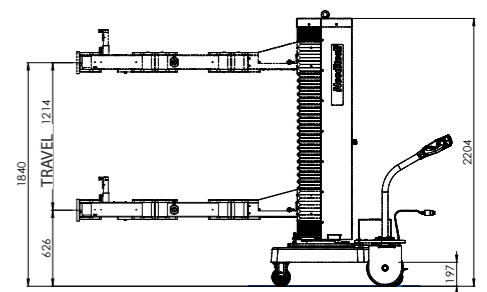
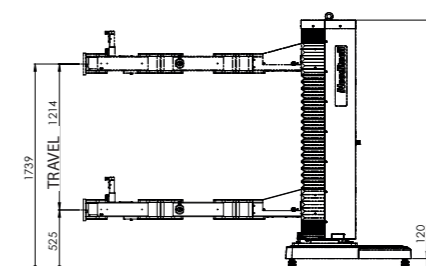
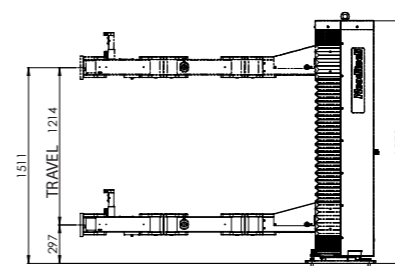
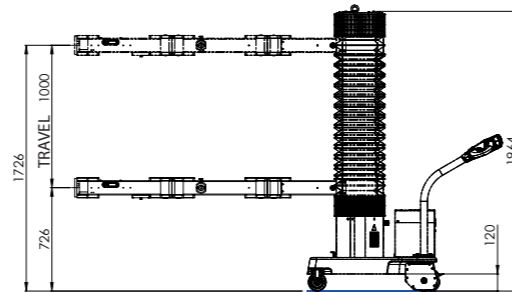
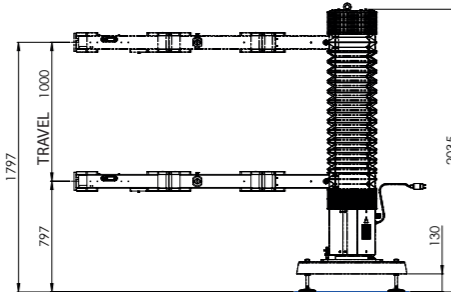
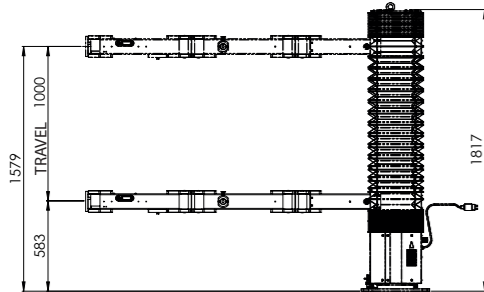
**SC0404**

base **SM0806**



**SC0421**

base **SM0807**



**ELECTRIC**  
230V 50HZ

**ELECTRIC**  
230V 50HZ

**AUTONOMOUS**  
Universal charger

**ELECTRIC**  
230V 50HZ

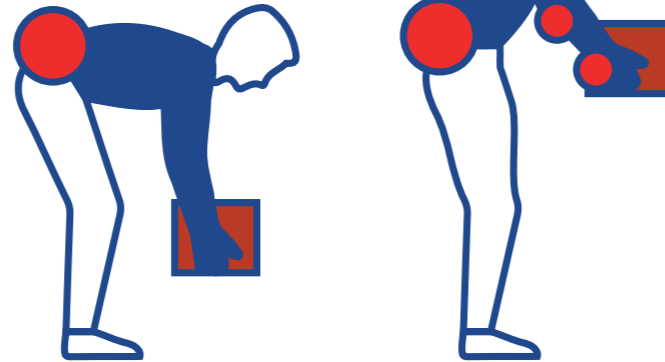
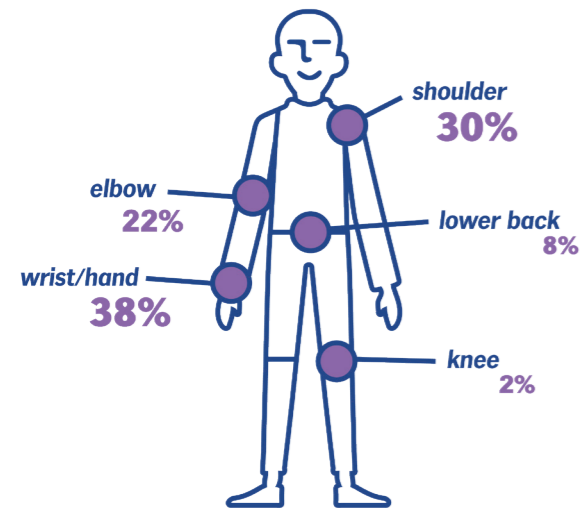
**ELECTRIC**  
230V 50HZ

**AUTONOMOUS**  
Universal charger

# MSDs : musculoskeletal disorder

Musculoskeletal Disorders or MSD, are injuries and disorders that affect the human body's movement or musculoskeletal system, muscles, tendons, ligaments, nerves, discs, or blood vessels. The professional activity can be at their origin, their maintenance or their aggravation.

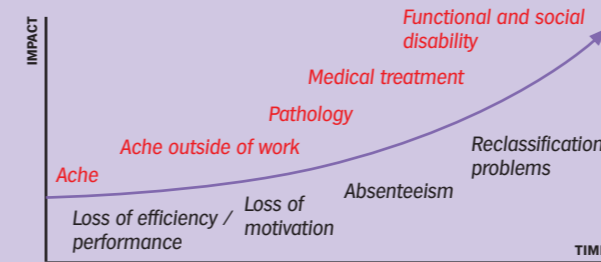
## SORE POINTS



Source : French Health Insurance / 2022

## CONSEQUENCES FOR EMPLOYEES/COMPANIES

The impacts are exponential



Source : CARSAT

## DIRECT COSTS

### Professional diseases

Carpal tunnel syndrome .....	11 000 €
Lumbago .....	52 000 €
Stiffened shoulder .....	80 000 €

### Work-related accidents

Average cost of an occupational injury with time off work.....	3 000 €
Average cost of a handling accident with time off .....	4 500 €

## INDIRECT COSTS (= 3 to 5 times of the direct cost)

### For the company

- Responsibility of the general manager
- Civil responsibility
- Loss of production
- Substitution
- Training

### For the employee

- Work stoppage
- Medical costs (care, hospitalization, rehabilitation...)
- Loss of wages
- Work incapacity
- Return to employment

➤ **AVERAGE COST : 21,000 €**