

**Manufacturer of cobotic manipulators**  
over the past **15 years**

-  Ergonomic and mobile equipment
-  Prevention of MSDs & WRI
-  An ASS at your disposal
-  A wide range adapted to all your applications
-  Study, design, assembly and installation by our own staff
-  Products made in France (44)



**SCARA**

Product range  
50 & 100 kg



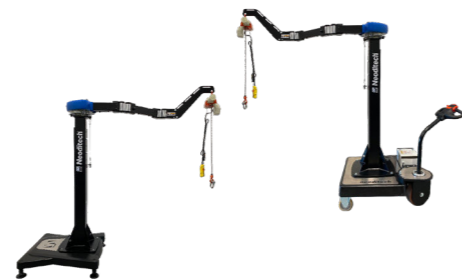
**ERGO360°**

Product range  
100, 150 & 200 kg



**PM**

Product range  
70 & 100 kg



**MAP**

Product range  
50 & 100 kg



NEODITECH : +33 (0)2 40 46 15 71 - 01/2023 - Photos not contractually binding. The author has applied his best efforts to checking this document and shall not be held liable for any errors or omissions.



**Product ranges : 70 & 100 kg**

**European conformity** 

[www.neoditech.com](http://www.neoditech.com)

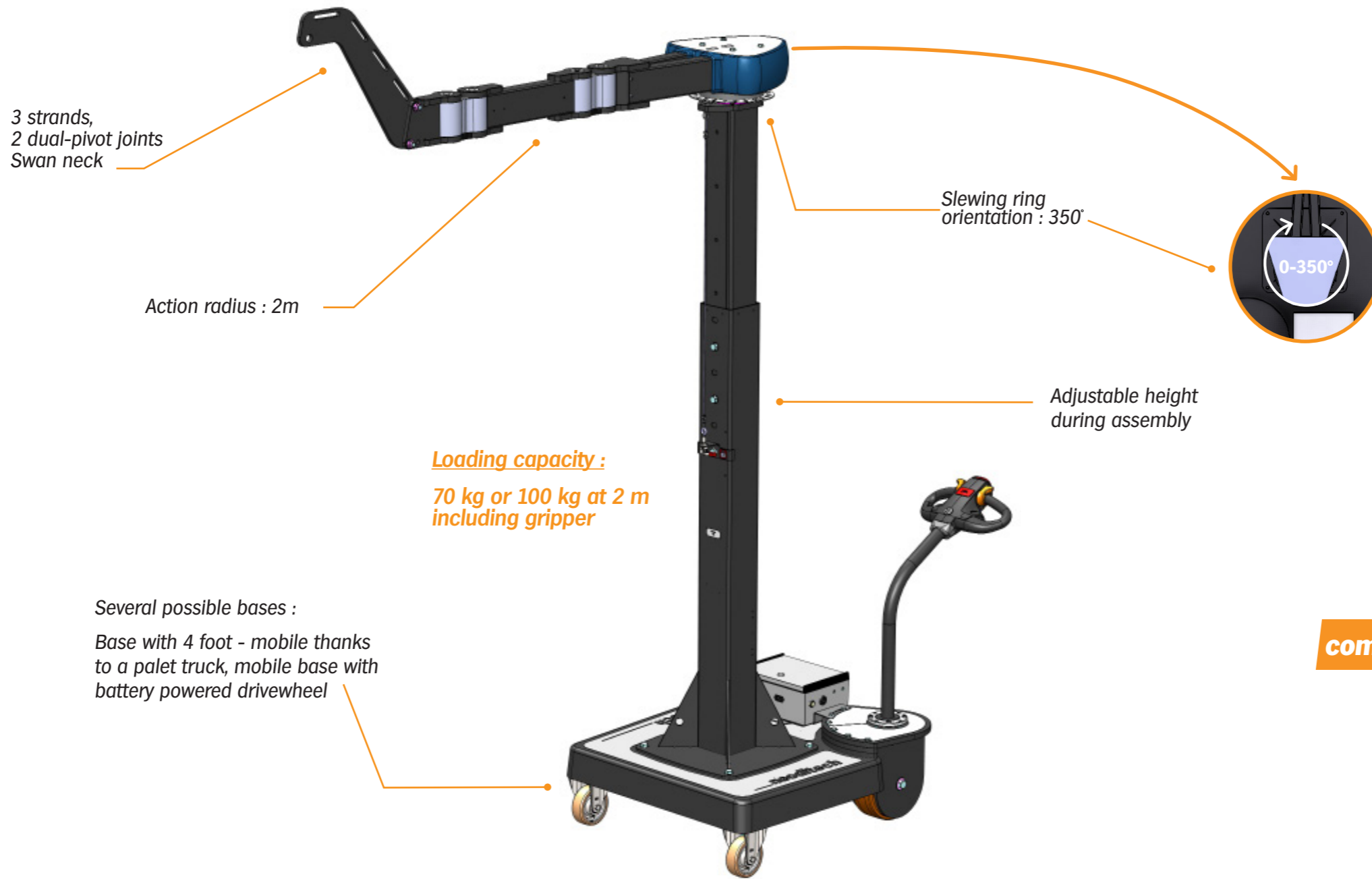
Follow us !   

Z.A. des 4 Chemins  
56 Rue de la Folle Blanche  
44330 MOUZILLON - FRANCE  
Tél. **+33 (0)2 40 46 15 71**  
Email : [info@neoditech.com](mailto:info@neoditech.com)

**PM**  
Mobile **jib crane**



# Mobile jib crane



## The advantages

**smooth**

**portable**

**swift**

**self-sufficient battery powered**

**ergonomic**

**security**

**reduction of drudgery**

**taken out of the center of gravity**

**compatible with a wide range of grippers**

**ease of use**

**230V 50Hz**



## Mobile jib crane

The **PM mobile jib crane** allows the safe handling of bags, drums, boxes, etc., weighing up to 100 kg.

Its articulated arms on double pivots, identical to the SCARA arm, guarantee a great fluidity of movement, even when the equipment is loaded.

Compatible with many gripping systems (lifting tubes, hoists, etc.), it provides a versatile, scalable and safe approach to many lifting problems in industrial environments, helping to reduce MSDs. Its mobile base with battery powered drivewheel offers great manoeuvrability, even in small environments.

70 kg

100 kg

### PM1400 - ON WHEELS

- Radius 2 m
- Adjustable height from 2566 to 3766 mm
- Capacity 70 kg at 2 m
- 3 strands, 2 dual-pivot joints
- Mobile base with battery powered drivewheel

### PM1401 - ON FEET

- Radius 2 m
- Adjustable height from 2465 to 3665 mm
- Capacity 70 kg at 2 m
- 3 strands, 2 dual-pivot joints
- 4-footed base movable with a pallet truck

### PM1405 - ON WHEELS

- Radius 2 m
- Adjustable height from 2587 to 3787 mm
- Capacity 100 kg at 2 m
- 3 strands, 2 dual-pivot joints
- Mobile base with battery powered drivewheel

### PM1406 - ON FEET

- Radius 2 m
- Adjustable height from 2486 to 3686 mm
- Capacity 100 kg at 2 m
- 3 strands, 2 dual-pivot joints
- 4-footed base movable with a pallet trucks

## Products





## Functions

**FC0495**  
Extended radius  
2,7m - 50kg



**FC0520**  
Extended radius  
2,7m - 70kg



## Tools

**OUT070**  
Hoist with control  
box 60kg  
230V 50Hz



**OUT073**  
Battery powered  
24V hoist 100kg  
Universal charger



**OUT012**  
Hoist with ergono-  
mic handle 60kg  
230V 50Hz



**OUT078**  
Hoist with control  
box 100kg  
230V 50Hz



**OUT069**  
Hoist with ergono-  
mic handle 100kg  
230V 50Hz

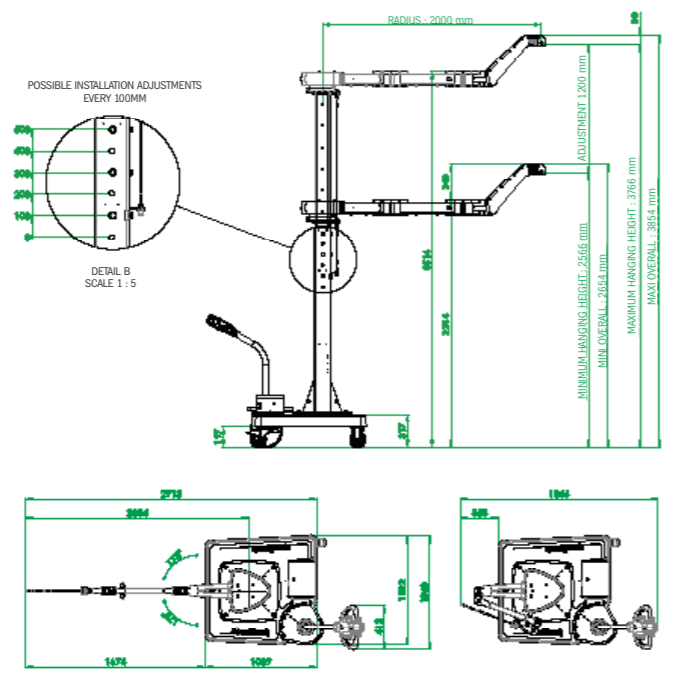


**OUT098**  
Manual tool  
for drills

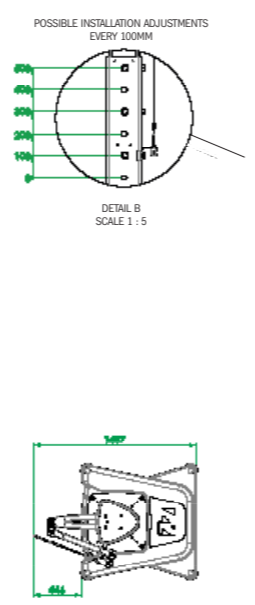


# PM1400

## Technical data Crane 70kg

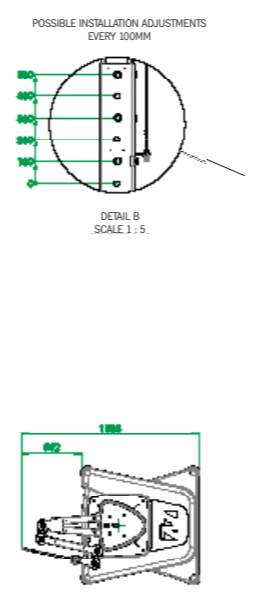
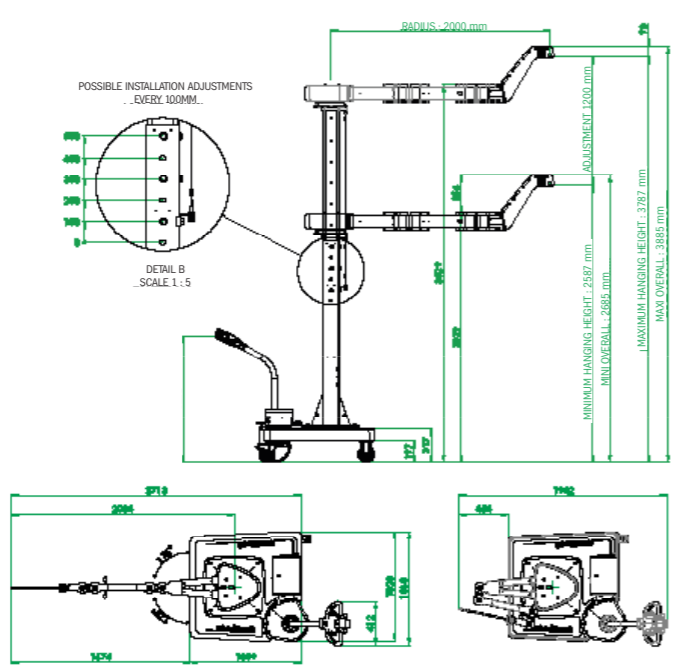


# PM1401



# PM1405

## Technical data Crane 100kg

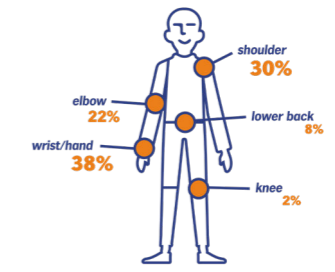


# MSDs : Musculoskeletal disorder

Musculoskeletal Disorders or MSD, are injuries and disorders that affect the human body's movement or musculoskeletal system, muscles, tendons, ligaments, nerves, discs, or blood vessels. The professional activity can be at their origin, their maintenance or their aggravation.

# Diagram & MSDs

### SORE POINTS



Source : French Health Insurance / 2022

### DIRECT COSTS

**Professional diseases**

Carpal tunnel syndrome	11 000 €
Lumbago	52 000 €
Stiffened shoulder	80 000 €

### Work-related accidents

Average cost of an occupational injury with time off work	3 000 €
Average cost of a handling accident with time off	4 500 €

### INDIRECT COSTS (= 3 TO 5 TIMES OF THE DIRECT COST)

#### For the company

- Responsibility of the general manager
- Civil responsibility
- Loss of production
- Substitution
- Training

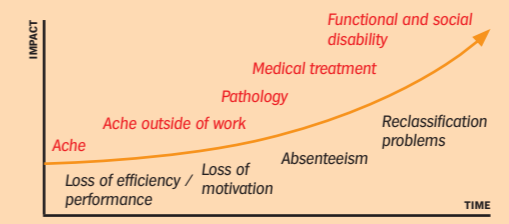
#### For the employee

- Work stoppage
- Medical costs (care, hospitalization, rehabilitation...)
- Loss of wages
- Work incapacity
- Return to employment

➤ **AVERAGE COST : € 21,000**

### CONSEQUENCES FOR EMPLOYEES/COMPANIES

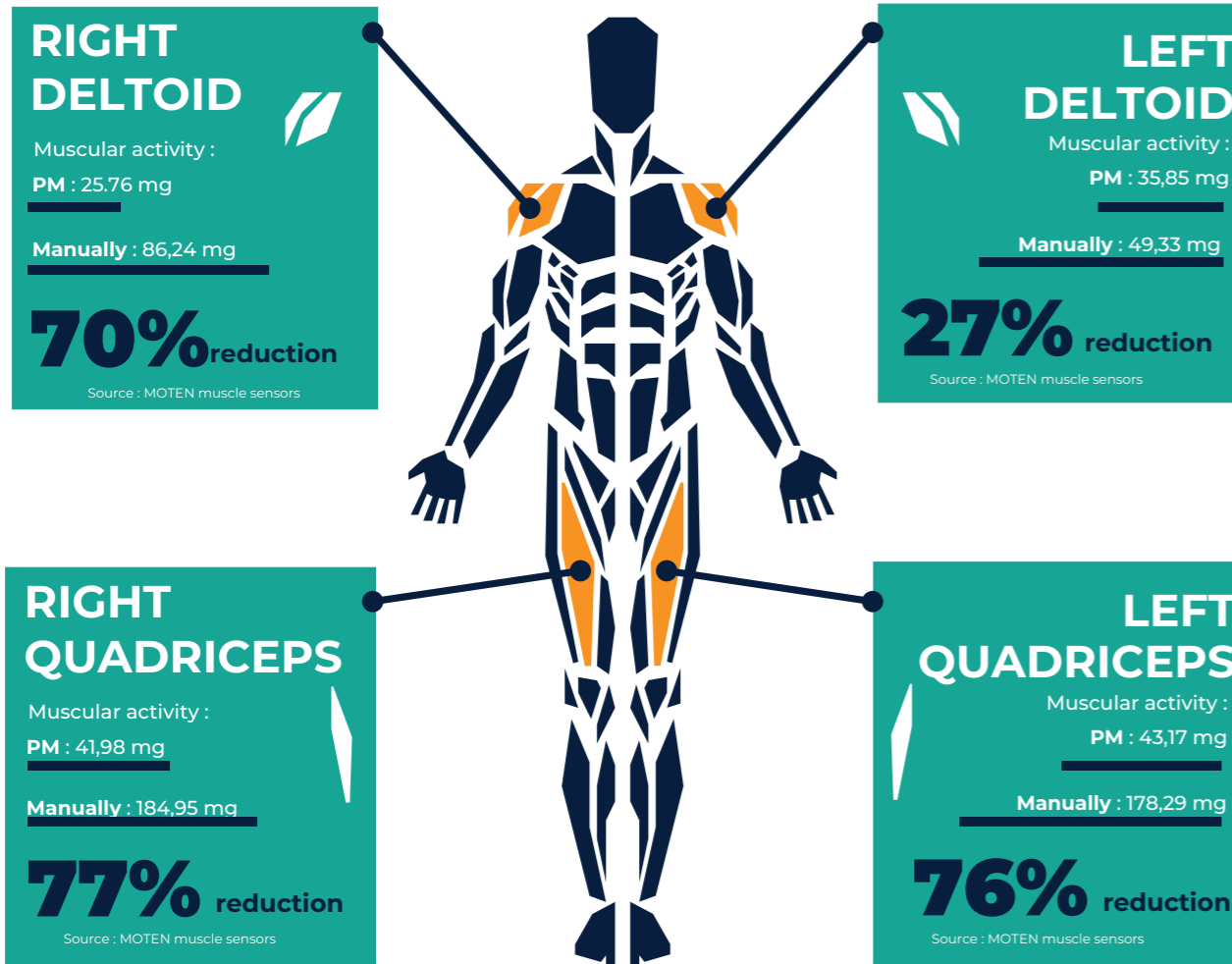
The impacts are exponential.



Source : CARSAT

# Our impact on the muscular activity

The sensors used by MOTEN measure the movements and muscular activity of operators in a work situation. For this test run, an operator handled 30kg drums, over 5 cycles of 5 repetitions, manually (left-handed operator) and then with the help of the PM.



The postural risk is the measurement of the dynamic, uncomfortable or unnatural postures required by the manipulations.

They require more and more effort from muscles, tendons, nerves and bones, as the movements reach the limits of the range of motion and can therefore lead to MSDs over time.

